



4" Oval Straight Sidebar

Part No. A1523S/B



Fits: 2009-2014

Ford F150 Super Crew Cab



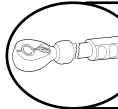
ASSISTANCE IS RECOMMENDED.



REMOVE CONTENTS FROM BOX. VERIFY ALL PARTS ARE PRESENT.



READ INSTRUCTIONS CAREFULLY BEFORE STARTING INSTALLATION.



DO NOT OVER TORQUE. STANDARD OPERATING LOAD FOR TIGHTEN BODY MOUNT NUTS & BOLTS VARIES FROM 45 TO 65 FOOT POUND.



60-180 min



Cutting Not Required



Drilling Not Required



support@trailfx.com



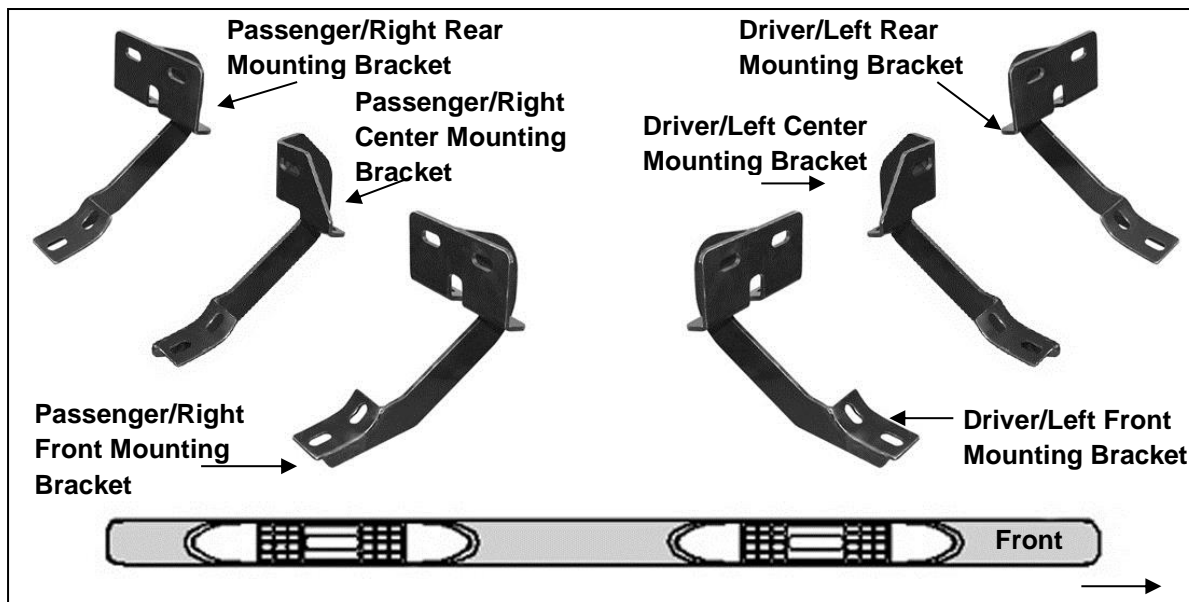
1 866 638 4870



POLISHED STAINLESS STEEL – LIMITED LIFETIME
POWDER COATED BLACK – 3 YEARS

PARTS LIST:

Qty	Part Description	Qty	Part Description
1	Driver/Left Side Bar	10	8mm Deep Clip Nuts
1	Passenger/Right Side Bar	10	8-1.25mm x 30mm Hex Bolts
2	Driver/Left Front-Passenger/Right Rear Mounting Brackets	22	8-1.25mm x 25mm Hex Bolts
2	Passenger/Right-Driver/Left Rear Front Mounting Brackets	10	8mm x 28mm OD x 3mm Large Flat Washers
1	Driver/Left Center Mounting Bracket	32	8mm x 24mm OD x 2mm STD Flat Washers
1	Passenger/Right Center Mounting Bracket	32	8mm Lock Washers
		10	8mm Hex Nuts



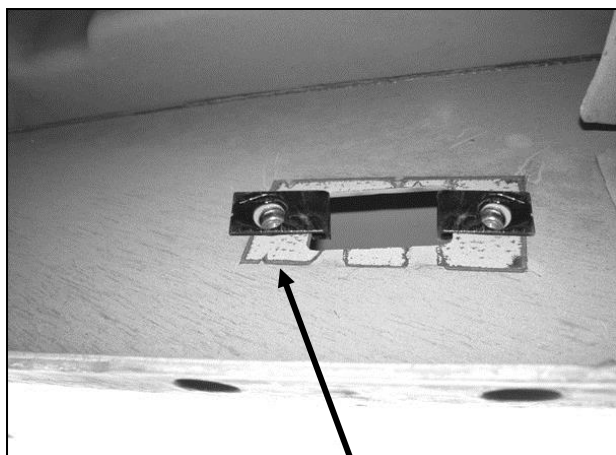
INSTALLATION PROCEDURE:

- Starting on the driver side of the vehicle, locate the (2) holes in the pinch weld to find the factory mounting holes in the inner side panel, **(Figure 1)**. **NOTE:** The inner holes may be covered with sealing tape or insulation. Slide the 8mm Clip Nuts into the opening with the nut towards the inside. Line up the threaded nut on the clip with the round holes, **(Figure 1)**.
- Partially attach the driver side Mounting Bracket to the Clip Nuts with the included (2) 8mm x 30mm Hex Bolts, (2) 8mm Lock Washers and (2) 8mm x 28mm Large Flat Washers, **(Figure 2)**. Depending on model and year, the brake cable

may be run on the inside or outside of the Bracket. Do not tighten hardware at this time. **NOTE:** The Cradle on the Front Mounting Bracket should face to the rear of the vehicle.

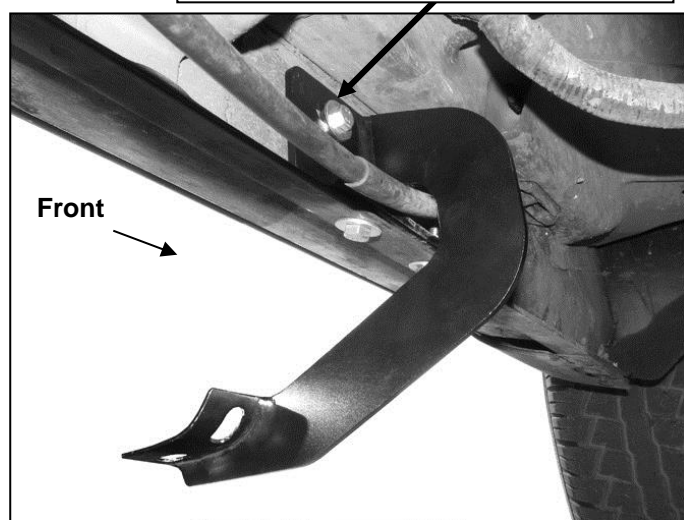
3. Align the bottom holes in the front Mounting Bracket with the (2) holes in the pinch weld. Bolt the Bracket to the pinch weld using the included (2) 8mm x 25mm Hex Bolts, (2) 8mm Lock Washers, (4) 8mm STD Flat Washers and (2) 8mm Hex Nuts, (**Figure 2**). **NOTE:** Insert the bolts up from the bottom of the pinch weld and through the Bracket.
4. Repeat **Steps 2 – 4** for Rear Mounting Bracket installation. **NOTE:** The cradle on the Rear Mounting Bracket should face the front of the vehicle, (**Figure 3**). The mounting holes will be the last set towards the back of the cab.
5. Select the driver side Center Mounting Bracket. Locate the mounting location and insert (1) 8mm Nut Clip as per **Step 2, (Figure 4)**. Secure the Center Bracket to the Clip Nut with (1) 8mm x 30mm Hex Bolt, (1) 8mm Lock Washer and (1) 8mm x 28mm Large Flat Washer, (**Figure 5**). Line up the (1) bottom hole with the hole in the pinch weld and bolt together with (1) 8mm x 25mm Hex Bolt, (1) 8mm Lock Washer, (2) 8mm STD Flat Washers and (1) 8mm Hex Nut. Do not tighten hardware at this time. **NOTE:** The cradle on the Center Mounting Bracket should face the front of the vehicle.
6. Carefully position the Sidebar onto the Mounting Bracket cradles and attach it using the included (6) 8mm x 25mm Hex Bolts, (6) 8mm Lock Washers and (6) 8mm STD Flat Washers, (**Figures 5 & 6**). Do not tighten hardware at this time.
7. Level and adjust the Sidebar properly and tighten all hardware.
8. Repeat **Steps 2 – 8** for passenger Sidebar installation.
9. Do periodic inspections to the installation to make sure that all hardware is secure and tight.

Driver Side Installation Pictured

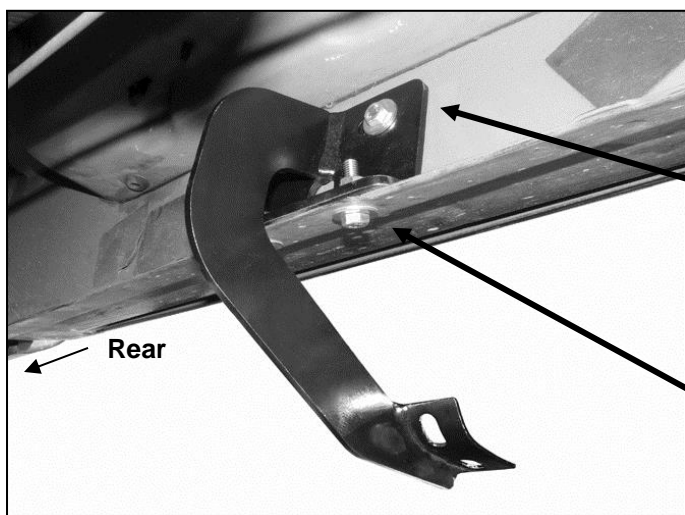


(Fig 1) 8mm Clip Nuts (hole in body panel shown for example only-location and shape may differ slightly)

(2) 8mm Clip Nuts
(2) 8mm x 30mm Hex Bolts
(2) 8mm Lock Washers
(2) 8mm x 28mm Large Flat Washers



(Fig 2) Driver side-front Mounting Bracket location



(Fig 3) Driver side-rear Mounting Bracket location

(2) 8mm Clip Nuts
(2) 8mm x 30mm Hex Bolts
(2) 8mm Lock Washers
(2) 8mm x 28mm Large Flat Washers

(2) 8mm x 25mm Hex Bolts
(2) 8mm Lock Washer
(4) 8mm STD Flat Washers
(2) 8mm Hex Nuts

Driver Side Installation Pictured



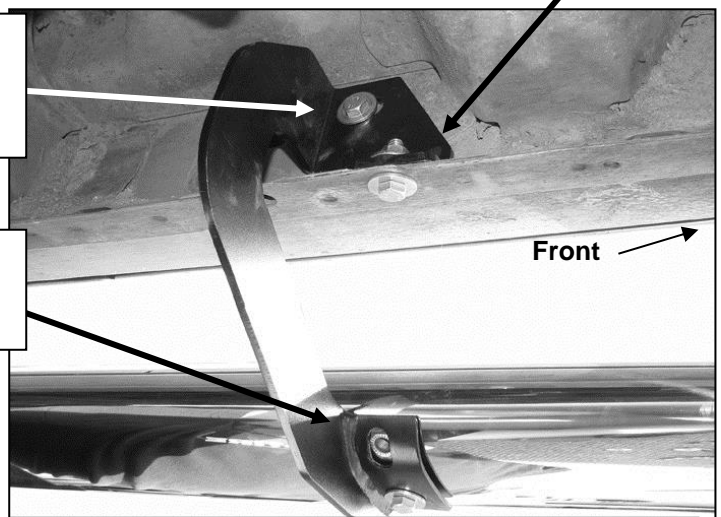
(1) 8mm Clip Nut

8mm x 25mm Hex Bolt
 8mm Lock Washer
 (2) 8mm STD Flat Washers
 8mm Hex Nut

(Fig 4) Driver side-center Mounting Bracket location

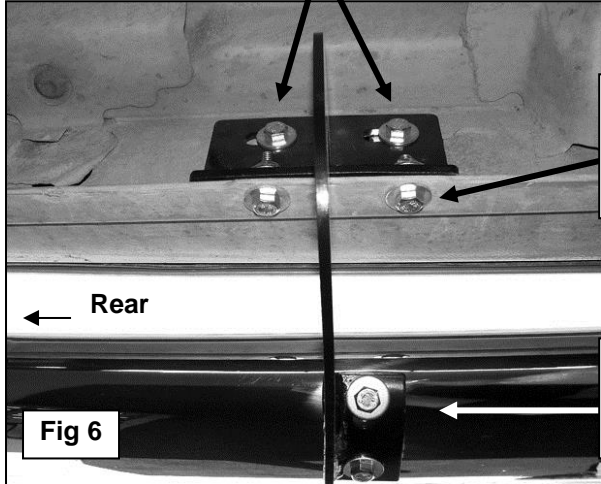
8mm Clip Nut
 8mm x 30mm Hex Bolt
 8mm Lock Washer
 8mm x 28mm Large Flat Washer

(2) 8mm x 25mm Hex Bolts
 (2) 8mm Lock Washer
 (2) 8mm STD Flat Washers



(2) 8mm Clip Nuts
 (2) 8mm x 30mm Hex Bolts
 (2) 8mm Lock Washers
 (2) 8mm x 28mm Large Flat Washers

(Fig 5) Driver Side Center Mounting Bracket location



(2) 8mm x 25mm Hex Bolts
 (2) 8mm Lock Washer
 (4) 8mm STD Flat Washers
 (2) 8mm Hex Nuts

(2) 8mm x 25mm Hex Bolts
 (2) 8mm Lock Washer
 (2) 8mm STD Flat Washers

Fig 6

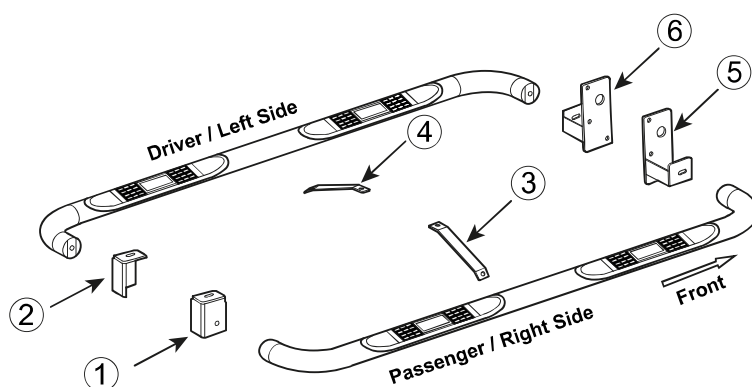
PARTS IDENTIFICATION GUIDE

Driver Side tube packed using "Green" color foam sheet. Passenger Side tube packed using "White" color foam sheet

No.	Parts Identification
1	Passenger / Right 'Rear' Bracket marked "PR"
2	Driver / Left 'Rear' Bracket marked "DR"
3	Passenger / Right 'Center' Bracket marked "PC"
4	Driver / Left 'Center' Bracket marked "DC"
5	Passenger / Right 'Front' Bracket marked "PF"
6	Driver / Left 'Front' Bracket marked "DF"

Note:

- This guide is to identify the parts and not a reference for part count.
- Product / Bracket image is for representative purpose only.
- Actual design may vary based on application.
- Refer Installation Instructions for Hardware Kit detail.

**PRODUCT CARE**

- Periodically check the product to ensure all fasteners are tight and components are intact.
- Regular waxing is recommended to protect the finish of the product.
- **Use ONLY Non-Abrasive automotive wax.** Use of any soap, polish or wax that contains an abrasive is detrimental and can scratch the finish leading to corrosion.
- Aluminum polish may be used to polish small scratches and scuffs for **Stainless Steel finish.**
- Mild soap may be used to clean the product for both **Stainless Steel and Black finish.**

FAQ's**1. Hardware's are not of correct size.**

In GMC / Chevrolet truck model 2006 & up, customer needs to reuse the factory body bolts to install the bracket. If your vehicle is not GMC / Chevrolet 2006 & up, please ensure that holes are not partially covered with any plastic grommet or rust? If it is, please remove the plastic grommet & rust from the thread holes & re-try the installation.

2. Mounting Bracket are not getting Installed properly.

In some cases Illustration images shown in Installation manual may not be the exactly same as per actual vehicle images ,also if Driver / Passenger side mounting brackets are very identical in the design, suggest referring Parts Identification guide to avoid fitment issue.

3. Products are thumping / rattling after installation.

Please ensure that all required mounting brackets / hardware's are installed & tighten correctly. Suggest using white lithium / regular grease between the metal to metal contact surfaces.

4. Side Bar is not aligning with vehicle / Step Pads are not aligning with vehicle doors.

Side bar may be interchanged or mounting brackets are not installed at the correct position in the vehicle. Please refer Parts identification guide.

5. Missing / Excess Hardware.

Recheck hardware count as per the part list.

6. Product not installing properly.

Ensure make model year, cab length and bed size of your vehicle is listed in the application. All installation steps are followed correctly.

Check out these other TrailFX Products!!

www.TrailFX.com



Keystone Automotive Operations Inc. (KAO) warrants this product to be free of defects in material and workmanship at the time of purchase by the original retail consumer. KAO disclaims any other warranties, express or implied, including the warranty of fitness for a particular purpose or an intended use. If the product is found to be defective, KAO may replace or repair the product at our option, when the product is returned prepaid, with proof of purchase. Alteration to, improper installation, or misuse of this product voids the warranty. KAO's liability is limited to repair or replacement of products found to be defective, and specifically excludes liability for any incidental or consequential loss or damage.